



# Thank you

## For Your Support!

Doctors and Clinical Support Teams recognize the award-winning quality of AO products. Since 2014, the inaugural year of the Orthotown Townie Choice Awards, American Orthodontics has been recognized Best in Class more than any other orthodontic product manufacturer. Other honors we have earned include awards for manufacturing, local economic impact, and international marketing awards.

**BracePaste - Bonding: Adhesives**

---

**Mini Master - Brackets: Traditional**

---

**Empower 2 - Brackets: Self Ligating**

---

**ifit - Direct Bond Molar Tubes**

---

**NT3 - Archwires**

---

**MR - Band and Attachments**





Welcome to American Orthodontics.

Founded in 1968 and headquartered in Sheboygan, Wisconsin, American Orthodontics is committed to providing quality products, dependable delivery, and personalized service to the orthodontic specialist.

With over 700 global employees and product availability in over 110 countries, American Orthodontics is one of the largest privately held manufacturers of orthodontic appliances in the world and a leading supplier to Dental Service Organizations everywhere.

- Innovative products and processes provide the best overall value to our customers
- We manufacture nearly 98% of our product offerings in our state-of-the-art facility in Sheboygan, Wisconsin
- All required products are registered with the FDA and AO is ISO 13485:2016 certified
- MDSAP Certified (Medical Device Single Audit Program), demonstrating compliance in Australia, Brazil, Canada, Japan, and the United States
- American Association of Orthodontists (AAO) Member and AAOF Diamond Corporate Partner

## EMPOWER® 2 SELF LIGATION

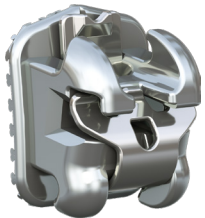
Offering multiple prescriptions, product features, and treatment options, Empower is the most complete self ligating bracket system in the world.

### Empower® 2 Clear Self Ligating



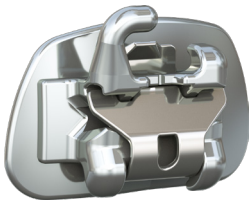
Empower 2 Clear is the perfect combination of beauty and performance. This fully interactive aesthetic bracket gives you the versatility and ease of self ligation, while giving your patients the beautiful smile they deserve both during and after treatment.

### Empower® 2 Self Ligating

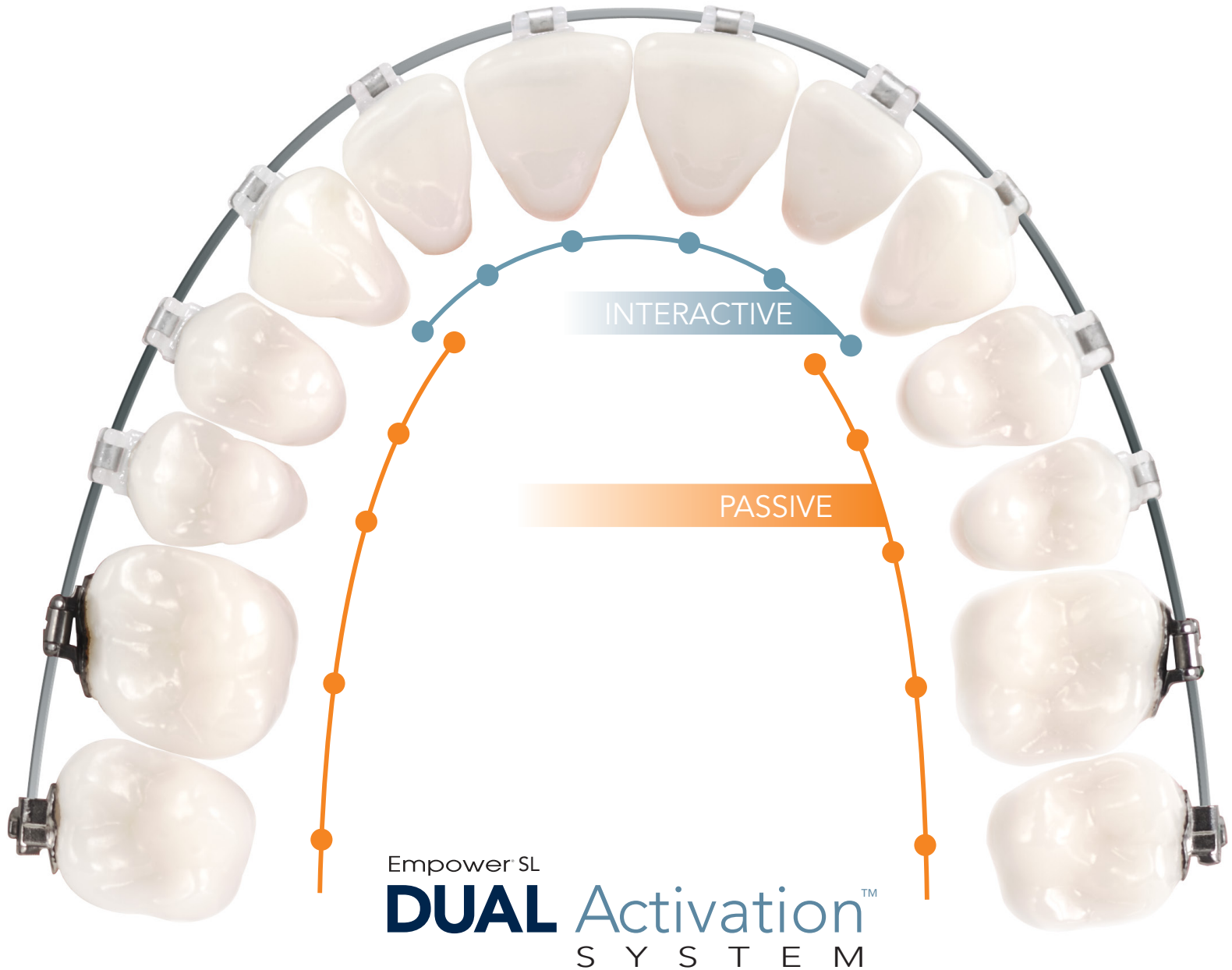


The metal brackets of Empower 2 give you the choice of a fully interactive, fully passive, or an innovative Dual Activation™ system which utilizes interactive brackets on the anteriors, and passive brackets on the posteriors. It's complete control with no compromise.

### Empower® 2 Reconvertible SL Molars



Whether you use self ligating or traditionally ligated brackets, Empower 2 self ligating molars deliver easy wire insertion while maintaining the lower friction of non-convertible tubes. It's efficiency with control.



Empower's Dual Activation™ system delivers control with interactive anterior brackets, and improved freedom play with passive posteriors. It is a single concept with multiple applications – all designed to enhance your treatment philosophy.

# radiance<sup>®</sup>

## TECHNICALLY BEAUTIFUL™

Radiance Plus<sup>®</sup> is the clearest ceramic twin bracket available\*, and is the perfect combination of beauty, performance, and strength.

- Beautiful monocrystalline body for brilliant appearance and incredible strength
- Visual Placement Aids (VPAs) provide bonding precision
- Quad Matte™ base delivers superior bond strength



\* Lopes Filho, Hibernon, et al., 2012. Influence of optical properties of esthetic brackets (color, translucence, and fluorescence) on visual perception. American Journal of Orthodontics & Dentofacial Orthopedics. April 2012. 141(4): 460-467.

## THE RELIABLE AESTHETIC CHOICE

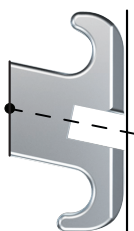
A touch of style goes a long way toward helping your patients look and feel their best during treatment. Iconix® Braces deliver dependable results in a beautiful and time-tested bracket body. A unique proprietary process ensures the brackets will keep their brilliant champagne appearance for the duration of treatment.



**i**CONIX®  
A E S T H E T I C   B R A C E S

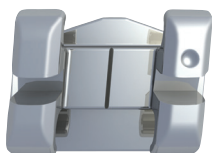
## METAL TWIN BRACKETS

For more than 30 years, orthodontists around the world have trusted the quality of Mini Master® Series brackets to deliver technologically advanced treatment, earning it a position as one of the best selling brackets in the industry. The patented design of each bracket dramatically increases bonding precision leading to exceptional results.



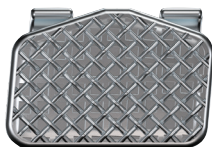
### Diagonal Torque™

- Center of arch slot kept over center of base
- Achieves predictable expression of torque
- Lower profile for reduced occlusal interference



### Diagonal Angulation™

- Delivers precise bracket placement
- Horizontal components parallel to occlusal plane
- Vertical components parallel to long axis of tooth



### Proven Bond Strength

- Tooth specific Maximum Retention™ bonding pads
- Dual mechanical retention
- 80 gauge mesh over an etched foil base

### Unprecedented Choices

McLaughlin, Bennett, Trevisi  
Roth Compatible  
Straight Wire  
Modified Straight Wire  
Alexander LTS  
Bio-Progressive  
McLaughlin, Bennett, Trevisi V-Slot  
Gianelly Bidimensional V-Slot  
V-Slot  
Butterfly Low Profile V-Slot  
IBD  
Micro Bonds  
SEBA  
ProTorque  
Mini Standard Edgewise  
Mini Tweed



 **MINI  
MASTER**



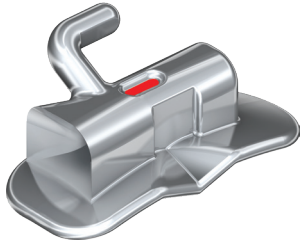
## BUCCAL TUBES AND BANDS

Our ifit® and LP® Buccal Tubes are some of the best selling molar tubes in the industry, and our comprehensive line of Maximum Retention bands deliver superior dependability.



### ifit® Tubes

- Industry leading, ultra low profile design for patient comfort and functionality
- Near horizontal hook orientation ensures no extension beyond the facial surface
- Large centered, funneled entrance for easy, successful wire insertion from any angle
- Horizontal placement line and instrument positioning guide for easy placement



### LP® Tubes

- Smooth contours for patient comfort
- Single, double, convertible, and weldable options
- Funneled mesial opening for easy wire insertion
- Occlusal/gingival positioning guides



### Maximum Retention™ Bands

- Etched pockets for increased bond surface and strength
- Reduced interproximal heights
- Laser etched sizing
- Rolled occlusal and gingival edges

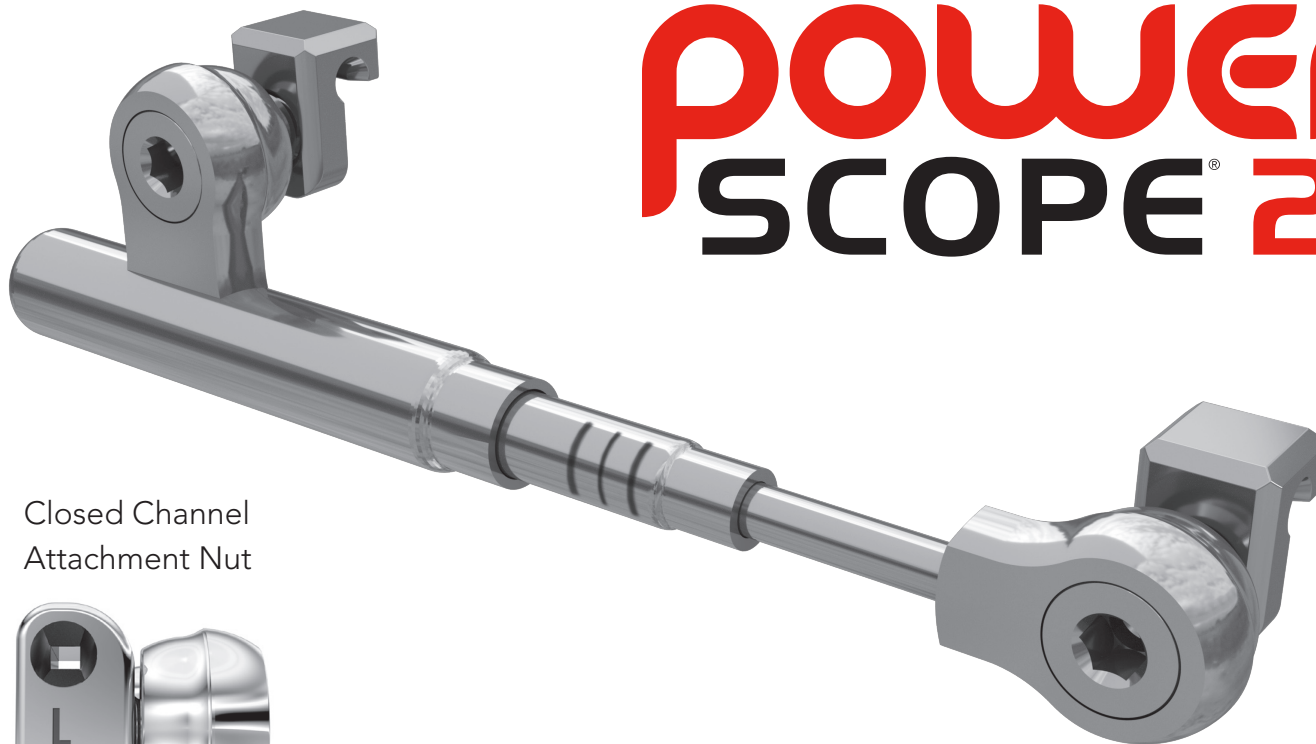


## CLASS II CORRECTION SIMPLIFIED

PowerScope 2 Class II Corrector delivers simple, efficient Class II correction like you have never seen before.

- Attachment nut increases durability and ease of installation
- Visual activation indicators make appliance activation easier
- Fixed one-piece, one-size-fits-all design
- Easy chairside wire-to-wire installation
- Alternate closed channel attachment nut option
- No assembly or lab setup required

**POWER**  
**SCOPE<sup>®</sup> 2**



Closed Channel  
Attachment Nut





# CONIX<sup>®</sup>

A E S T H E T I C W I R E

American Orthodontics' Iconix Aesthetic SE Niti Wire is the latest in the extensive arch wire line of American Orthodontics. Manufactured at AO's state-of-the-art manufacturing facility in Sheboygan, Wisconsin, this high-quality wire delivers exceptional superelasticity, shape memory, and springback for precise control and predictable results, while offering best-in-class aesthetics to complement all cosmetic bracket treatment options.

Available arch form options include VLP\* Arch Form, Natural Arch Form I, and Natural Arch Form III.\*\*

- Manufactured using premium Japanese NiTi material
- Proprietary Rhodium plating process offers best-in-class Aesthetics
- Durable "Rhodium white" finish is able to maintain an aesthetic appearance for the duration of treatment
- Highly resistant to permanent deformation
- Consistent loading and unloading forces
- Thoroughly tested to ensure consistent forces between lots
- 10 Individually wrapped arch wires per package

\* Compare VLP to the Damon<sup>®</sup> Arch Form, a registered trademark of Ormco

\*\* Compare Form III to the European Arch Form

# NT3<sup>®</sup>

SE NiTi Arch Wire

**SUPERELASTIC  
SHAPE MEMORY  
SPRINGBACK**

Available arch form options include VLP\* Arch Form, Natural Arch Form I, and Natural Arch Form III\*\*.

- Manufactured using premium Japanese NiTi material
- Highly resistant to permanent deformation
- Polished surface finish
- Consistent loading and unloading forces
- Thoroughly tested to ensure consistent forces between lots
- Sterilizable packaging options
- Pre-loaded stops and dimple options

\*\* Compare Form III to the European Arch Form



# bracepaste®

a d h e s i v e

BracePaste® medium viscosity adhesive provides optimum bonding of metal and ceramic brackets. It is designed to minimize bracket drift and provide easy flash clean up. Upon light cure, the bracket is ready for immediate tie in of arch wires. The adhesive is compatible with other light cure orthodontic sealants and bond enhancers.





Welcome to Atmos, a thermoformable plastic tooth positioning material from American Orthodontics. Atmos is Engineered for best-in-class formability and moisture tolerance while maintaining the clarity, durability, and stain resistance demanded by your patients.



Available in multiple sizes and thicknesses, this certified, bio-compatible material arrives in lab friendly packaging allowing you to easily select the proper material from your inventory.

# BEYOND THE BRACKETS

American Orthodontics delivers everything you need for an effective orthodontic practice. The range of supplies and peripherals we offer is one of the widest in the industry.



3524 Washington Avenue  
Sheboygan, Wisconsin, 53081 USA

Phone: +1 920 457 5051  
Email: [cs@americanortho.com](mailto:cs@americanortho.com)  
Web: [americanortho.com](http://americanortho.com)



©2020 American Orthodontics Corporation  
All Rights Reserved

FOLLOW US ON



Pat.: D820,457; D797,294; 10,111,731