

Move to the future.



The future of  
teen orthodontics  
is here.

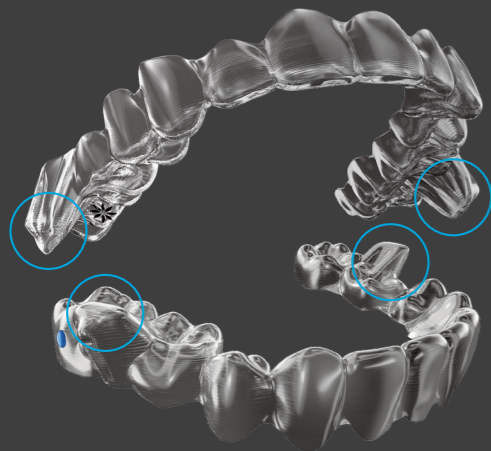
 invisalign® | made to move

© 2018 Align Technology, Inc. All rights reserved. Invisalign, among others, are trademarks and/or service marks of Align Technology, Inc. or one of its subsidiaries or affiliated companies and may be registered in the U.S. and/or other countries. 202061 Rev B

## Introducing Invisalign® treatment with mandibular advancement.

Invisalign treatment with mandibular advancement provides a teen-friendly solution to help bring the lower jaw forward while simultaneously straightening teeth.

Compared to other treatment options such as bulky Twin Blocks, metal functional appliances or traditional braces with elastics, Invisalign treatment with mandibular advancement is a more comfortable solution for your teen.



## How Invisalign treatment with mandibular advancement works:

When your teen bites down with their aligners in, the interlocking precision wings feature will engage and hold their lower jaw in a forward position to correct their bite.

In addition, there is simultaneous teeth alignment happening so your teen can start to see results from the start of treatment.

➤ Many teens post on social media, yet 88% are insecure about their appearance.<sup>1</sup>



## Why Invisalign® aligners for your teen?

### Confidence

Help your teen to keep smiling with confidence as Invisalign clear aligners are virtually invisible. Their friends may not even notice they are wearing them. Instead of hiding behind a mouth full of metal or bulky and abrasive functional appliances, they will enjoy the confidence of showing their smile every day.

Teens wearing Invisalign clear aligners are twice as likely to have a boost in self-esteem than teens wearing conventional metal braces<sup>1</sup>.

### Comfort

Invisalign aligners are removable, so your teen can enjoy the things they love, such as playing sports or eating their favorite foods. It also makes it easy for your teen to brush and floss normally to maintain good oral hygiene.

According to teens, Invisalign aligners are less painful than metal braces<sup>2</sup>.

### Compliance

Your teen may be more compliant<sup>3</sup> wearing Invisalign aligners vs. a traditional functional appliance as the aligners are less visible.

### Convenience

Unleash your teen's best smile sooner with **50% shorter**<sup>4,5</sup> treatment times with weekly aligner changes. The simultaneous alignment and bite correction achieved with Invisalign treatment with the precision wings feature may also speed up treatment compared with traditional appliances.

In addition, traditional appliances may break during wear and require extra appointments and time for your teen at the doctor's office.

Fewer doctor visits with Invisalign treatment means giving your teen more time for their studies, friends and passions.

As Invisalign aligners are removable, you don't need to worry about cooking your teen special meals which saves you time and effort!

<sup>1</sup> Invisalign Teen Confidence Survey. Conducted by Kelton for Align Technology 2014.

<sup>2</sup> In a pain score of 1-9, 1 being extremely painful and 9 not at all painful, Invisalign teenager patients (Qty:73) rated pain score of 6.1 vs traditional metal braces teenager patients (Qty: 76) rated pain score of 5.1.

<sup>3</sup> Data from a survey of 78 orthodontists (from NA, EMEA, APAC) experienced in treating teenagers (minimum of 40 cases, prior 8 months) with Invisalign clear aligners, regarding teenagers with permanent dentition; doctors were paid an honorarium for their time.

<sup>4</sup> With weekly aligner changes, compared with two-week aligner wear.

<sup>5</sup> Weekly aligner changes are recommended for all Invisalign treatments (with default staging protocol) for Invisalign Comprehensive, Invisalign First Comprehensive, Invisalign Lite, Invisalign Assist and Invisalign Go packages. The decision to prescribe weekly aligner changes is at the doctor's discretion. Monitor tooth movements such as rotations, extrusions, and significant root movements; particularly blue and black movements in the Tooth Movement Assessment (TMA). Depending on the patient response to treatment, particularly mature adults, consider longer periods between aligner changes.